





## Let Encompass be your guide to better protection.

Encompass protective apparel is designed to provide the best possible performance for the given application.

Encompass has developed a performance-based product classification framework to categorize our classic protective apparel according to the degree of protection afforded. To assist you in properly identifying the fluid resistance capabilities, please use the following category descriptions and look for the category icon next to the catalog numbers.

### SYMBOL GLOSSARY

ICON	CLASSIFICATION	FLUID EXPOSURE RATING	SUGGESTED ENVIRONMENT
	Basic Coverage	Designed for low risk exposure. The level of fluid resistance is minimal.	Will not protect against spraying, splashing or soaking.
	Fluid Resistant	Designed for moderate exposure. The level of fluid resistance is moderate.	Protects against minimal splashing and spraying.
	Fluid Barrier	Designed for moderate to high risk exposure. The level of fluid resistance is high.	Protects from the probable occurrence of splashing, spraying and limited soaking.
	Impervious	Designed for the highest risk of exposure. Passes *ASTM-F1670, Standard Test Method for Resistance of Materials Used in Protective Clothing to Penetration by Synthetic Blood and *ASTM-F1671, Standard Test Method for Resistance of Materials Used in Protective Clothing to Penetration by Blood-Borne Pathogens Using Phi-X174 Bacteriophage Penetration as a Test System.	Protects from the probable occurrence of soaking or strike-through

DISPOSABLE MATERIAL CODE	MATERIAL	LATEX-FREE
PE	Polyethylene	Yes
PE/SBPP	Polyethylene Coated SBPP	Yes
PE/SMS	Polyethylene Coated SMS	Yes
SBPP	Spunbond Polypropylene	Yes
SMS	SBPP/Meltblown Polypropylene/SBPP	Yes
SMMS	SBPP/Meltblown Polypropylene (2 layers)/ SBPP	Yes

\*American Society of Testing and Materials (ASTM)

Final selection must consider the degree of exposure risk for various procedures and be determined by the purchaser. Encompass provides no warranty against transmission of blood-borne diseases. For more information about our protection products, please contact your Encompass sales representative.



## Understanding AAMI

The Association for the Advancement of Medical Instrumentation (AAMI) is a unique alliance of nearly 6,000 members from around the world united by one mission — to increase the understanding and beneficial use of medical instrumentation through effective standards, educational programs, and publications. Standard PB70:2003 was established by AAMI to objectively rank the barrier protection performance of gowns and drapes into four levels to provide a clear guidance for proper gown selection based on risk of exposure.

Specific testing is required to achieve each level within AAMI identified critical zones.

AAMI Level	Applicable Test	Required Result	Exposure Risk
1	AATCC 42 - Impact Penetration Test	<= 4.5 g	Minimal
2	AATCC 42 - Impact Penetration Test AATCC 127 - Hydrostatic Pressure Test	<= 1.0g >= 20 cm	Low
3	AATCC 42 - Impact Penetration Test AATCC 127 - Hydrostatic Pressure Test	<= 1.0g >= 50 cm	Moderate
4	ASTM F1671 - Blood-borne Pathogen Penetration Test	Pass	High

### AATCC 42 - Impact Penetration Test

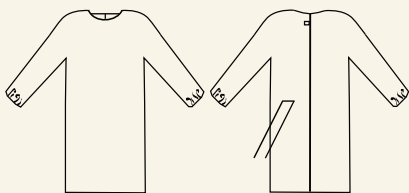
Measures the resistance of fabrics to liquid penetration by water spray impact. These test results predict barrier performance of an isolation gown, including critical zones, when fluids spray or splash onto it.

### AATCC 127 - Hydrostatic Pressure Test

Measures the resistance of fabrics to liquid penetration by water under constantly increasing hydrostatic pressure.

### ASTM F1671 - Bacteriophage Test for Surgical Gowns and Other Protective Apparel

Measures the resistance of materials to penetration of synthetic blood and blood-borne pathogens using PHI-X174 bacteriophage.



### **CRITICAL ZONES: Front, Back, Sleeves, Seams**

The entire isolation gown, including the front, back, sleeves and seams are considered critical zones.