

PULSTAR® LOGIX™ DVT PREVENTION SYSTEM



PulSTAR Logix is the latest addition to the StarSystem® Integrated Suite of DVT prevention products offered by Albahealth®.

Intelligent design features drive patient compliance and provide ease of use for clinicians.

The unique multi-wrap system offers four options for delivery of superior protection against DVT.

INTERMITTENT PNEUMATIC COMPRESSION EFFICACY

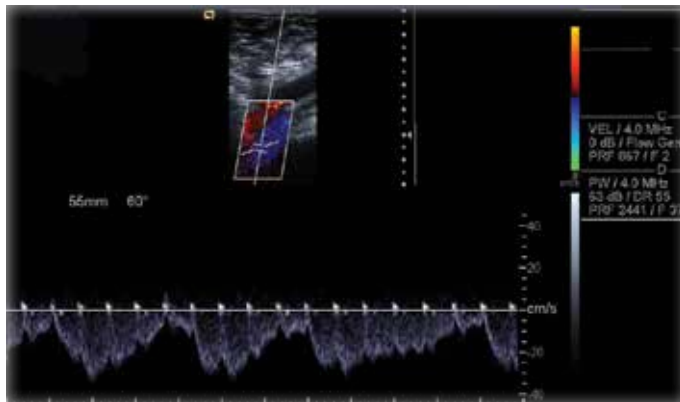


Intermittent Pneumatic Compression (IPC) Therapy resembles the normal regulatory pumping action of the calf and foot, which help drive blood of the deep veins through the body. IPC therapy delivered through inflation is administered by single patient use garments containing either one or more air bladders. Therapy can be applied to either the foot, calf, or calf and thigh combination garments which intermittently inflate with air by way of a powered pneumatic pump.

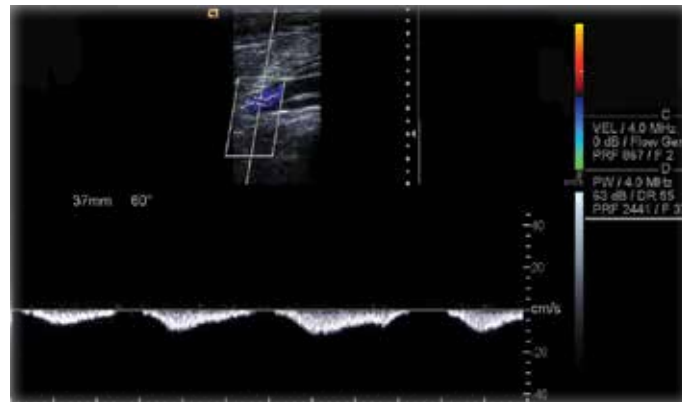
Venous Ultrasonography, also known as a Doppler Ultrasound, has become the most widely used diagnostic modality and clinical assessment, invasive or noninvasive, for the diagnosis and exclusion of acute DVT.¹ This form of testing accurately detects lower extremity clots by allowing doctors to see the speed and direction of blood flow in the veins and arteries.

The images below demonstrate lower extremity blood velocity via Ultrasonography without compression and with PulSTAR Logix calf pneumatic compression.

LOWER EXTREMITY BLOOD VELOCITY AT REST

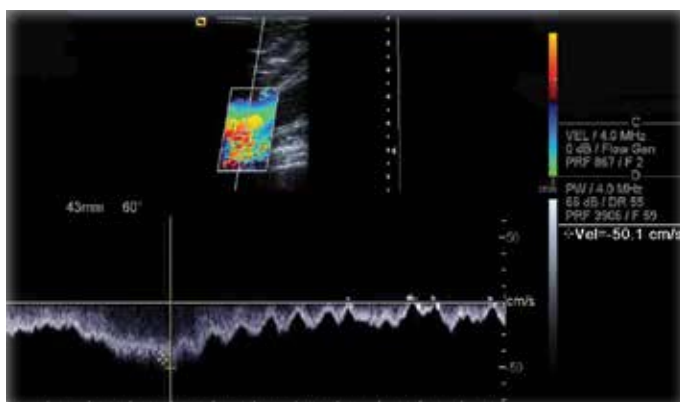


Common Femoral Vein (CFV) Blood Velocity at Rest, 24 cm/s

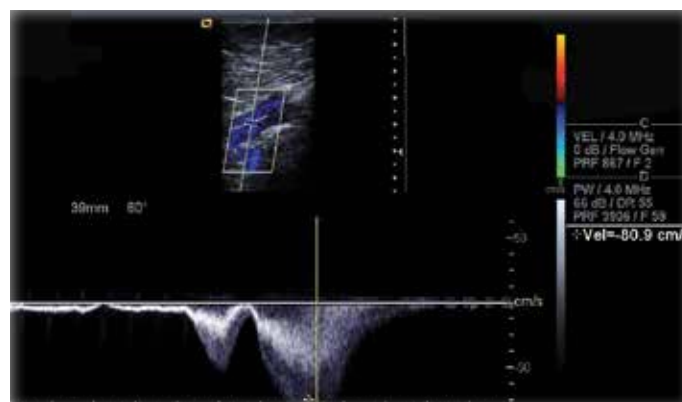


Popliteal Vein (POPV) Blood Velocity at Rest, 12 cm/s

LOWER EXTREMITY BLOOD VELOCITY WITH PULSTAR LOGIX PNEUMATIC COMPRESSION



Common Femoral Vein (cfv) Blood Velocity Compressed at 40mmHg, 50.1 cm/s



Popliteal Vein (popv) Blood Velocity Compressed at 40mmHg, 80.9 cm/s

PULSTAR® LOGIX™ DVT PREVENTION SYSTEM

PulSTAR Logix Pump

- Lightweight, weighs less than 5 lbs
- Auto-sensing technology recognizes mode of therapy
- Quick-connect design provides automatic therapy delivery
- Optimum therapeutic pressure delivers customized pressure to patient limbs
- Pause feature allows therapy to be temporarily suspended and resumed on demand
- Clinician override feature allows pressure adjustment
- Kink-resistant tubing prevents therapy interruption
- Permanently attached 8' color-coded tubing for easy mode and limb identification
- Proprietary safety connectors will not connect to other hospital equipment
- Calf or foot therapy options
- Single or dual limb operation
- LCD screen easily visible from multiple angles
- Audio and visual alarms
- LED indicator lights located next to each button illuminate to confirm current operation
- Calf compression delivers 40mmHg, Foot compression delivers 135mmHg



LX5000 IPC Pump

PulSTAR Logix Sleeve System

The PulSTAR Logix sleeve system features multiple styles with single chamber air bladders positioned on the anterior of the calf to promote superior patient comfort. Each style offers multiple sizes to fit the majority of patient populations and distinct features designed to meet hospital and patient needs.

- Select Logix Calf Premium materials incorporating breathability and anti-microbial treatment help promote skin integrity
- Legacy Logix Calf Classic profile with a history of comfort and performance
- Basic Logix Calf Economical option with all of the essentials
- Legacy Logix Foot Classic foot profile in two sizes



Select Logix Calf



Legacy Logix Calf



Basic Logix Calf



Legacy Logix Foot

PulSTAR Logix DVT Prevention System

SIZE	DESCRIPTION	CIRCUMFERENCE	PULSTAR LOGIX	SELECT LOGIX	LEGACY LOGIX	BASIC LOGIX	CASE QTY
N/A	PulSTAR Logix Pump	N/A	LX5000	N/A	N/A	N/A	1 EA
Small	Logix Calf Sleeve	8" to 11"	N/A	LS500-00	LL500-00	LB500-00	10 PR
Medium	Logix Calf Sleeve	11" to 16"	N/A	LS500-01	LL500-01	LB500-01	10 PR
Large	Logix Calf Sleeve	16" to 21"	N/A	LS500-02	LL500-02	LB500-02	10 PR
X-Large	Logix Calf Sleeve	21" to 27"	N/A	LS500-03	LL500-03	LB500-03	10 PR
Regular	Logix Foot Sleeve	7.5" to 12"	N/A	N/A	LF700-01	N/A	10 PR
Large	Logix Foot Sleeve	12" to 16"	N/A	N/A	LF700-02	N/A	10 PR

¹Ultrasonography and Diagnosis of Venous Thromboembolism, Brenda K. Zierler, PhD, Circulation. 2004;109:1-9-1-14



Better care starts
with safety and comfort.

Albahealth is a subsidiary of Encompass Group LLC
All products listed in this brochure are free of natural rubber latex

800-262-2404 | www.encompassgroup.net



© 2013 Encompass Group, LLC
All Rights Reserved
Lit. No. AC10175 REV 05/13